

Shirenewton Parish Magazine



November 2025

Price £1:50



PUTTING THE CLIENT FIRST

Our Financial Planners are highly qualified and have the experience to help you with:

▶ Pensions and Retirement Planning	
▶ Savings and Investments	
▶ Inheritance Tax Planning	
▶ Mortgages	
▶ Insurance and Protection	

The value of pensions and investments can fall as well as rise, you may get back less than you invested.

Your home may be repossessed if you do not keep up repayments on your mortgage.

The Financial Conduct Authority do not regulate Inheritance Tax Planning.

Equity Release will reduce the value of your estate and can affect your eligibility for means tested benefits.



Please contact us for a free initial consultation on:

Mobile: 07979 157259

Chepstow office: 01291 626373 | Abergavenny office: 01873 854488

E: joshlewis@thinkpositive.co.uk | www.iam-financial-advice.co.uk

IAM Financial Planning Limited is an Appointed Representative of Quilter Financial Planning Solutions Limited, who are authorised and regulated by the Financial Conduct Authority

HARVEST AT SHIRENEWTON PRIMARY

In early October I was invited to lead a Harvest assembly at Shirenewton Primary. To my delight as I arrived in the assembly hall, every available surface was piled up high with donations of long life food ready for donation to the foodbank. The generosity and kindness of the children and their families was so touching.

I explained to the children that there were two main elements to a Christian Harvest celebration. The first is to give thanks for those who are involved in food production. I held up a box of rice krispies and asked if we grow rice in Wales? I got a unanimous no - very well informed children! So I asked how would the rice farmers get the rice to us? By plane or by boat perhaps. So we also need to thank the plane pilots and boat captains, dock workers, loading operators and so on. Then I asked how the rice gets puffed up?!? Bit of a mystery if I'm honest but we agreed that a chef must be involved somehow! And then factory workers to package it up. How do we know what is in the box? We need a designer, someone good at artwork, to design a colourful box for us. We need shelf stackers and checkout assistants to help sell the food to us. And before long, we had a very big list of people to thank.

The second element of Harvest for us as Christians, is also to thank someone else. At this point I held up a packet of seeds with a picture of a pumpkin on. The children correctly guessed if we planted them, we would get pumpkins. Then I held up an acorn.... This of course has the potential to grow into an incredible, strong, beautiful oak tree. At this point, I turned dramatically to the large television screen to my left, and asked the children "...and what would happen if I planted the TV?" and the hall erupted into squeals of laughter! Even though we as humans are very clever, and can make very impressive pieces of technology, if we plant the things made by our own hands, nothing special happens. But if we plant something God has made, like a seed or an acorn, something incredible will grow. And so we thank God at Harvest as well, for the wonder of nature and the things he provides.

And I ended, with a third thankyou - to the children and their families for the gifts they had collected, for remembering those less fortunate than themselves, and providing for them too.

Blessings

Rev Zoe





Congratulations to our 200 Club winners in September:

1. Philip and Bryn Price
2. Jenny Peirce
3. Jean Jones

UPDATE ON THE CHURCH CLOCK FROM THE CHAIR OF THE COMMUNITY COUNCIL

11th July 2025 – we received an amended quotation addressed to the Shirenewton Community Council and a list of reference sites for the Cumbria Clock Company

23rd July 2025 – the donation was received and placed along with the monies raised by the bellringers in a new specific account under the Shirenewton Community Council's banking system.

21st August 2025 – after receiving references for their work, we placed an order with the Cumbria Clock Company

26th August 2025 – we received confirmation of the acceptance of the order and costs from the Cumbria Clock Company, and a deposit invoice would be raised after their visit to remove the clock had been completed.

24th September 2025 – we contacted the Cumbria Clock Company to find out if the visit had been made or arranged.

24th October 2025 – we contacted the Cumbria Clock Company for an update as we had been informed by a resident who visited the Church on 19th October that the clock had been removed.

24th October 2025 – we were informed by the Cumbria Clock Company that on the 6th October they removed the clock movement, hands and bevel work and they were taken to their workshop. They are in the process of working on the clock and mechanism and will be notifying the Council once work including the testing is complete.

At present we are still waiting to receive the deposit invoice from the Cumbria Clock Company.

Philip Butterworth

UPDATE ON THE CHURCH CLOCK FROM THE BELL CAPTAIN

The Memorial Clock has been removed from the church tower for refurbishment. Staff from The Cumbrian Clock Company started work on October 2nd and during the next 3 days the clock mechanism plus all the drives to the 4 clock faces were removed. These have all been taken to Cumbria for restoration back to full working order. Observers of the church tower will note the hands of the dials have also been removed. No date has yet been provided for the clocks return but we expect this will not happen until the New Year. The Cumbrian Clock Company has been involved in the restoration of many nationally important clocks, including the recent restoration of Big Ben.

SHAMBLES 2025

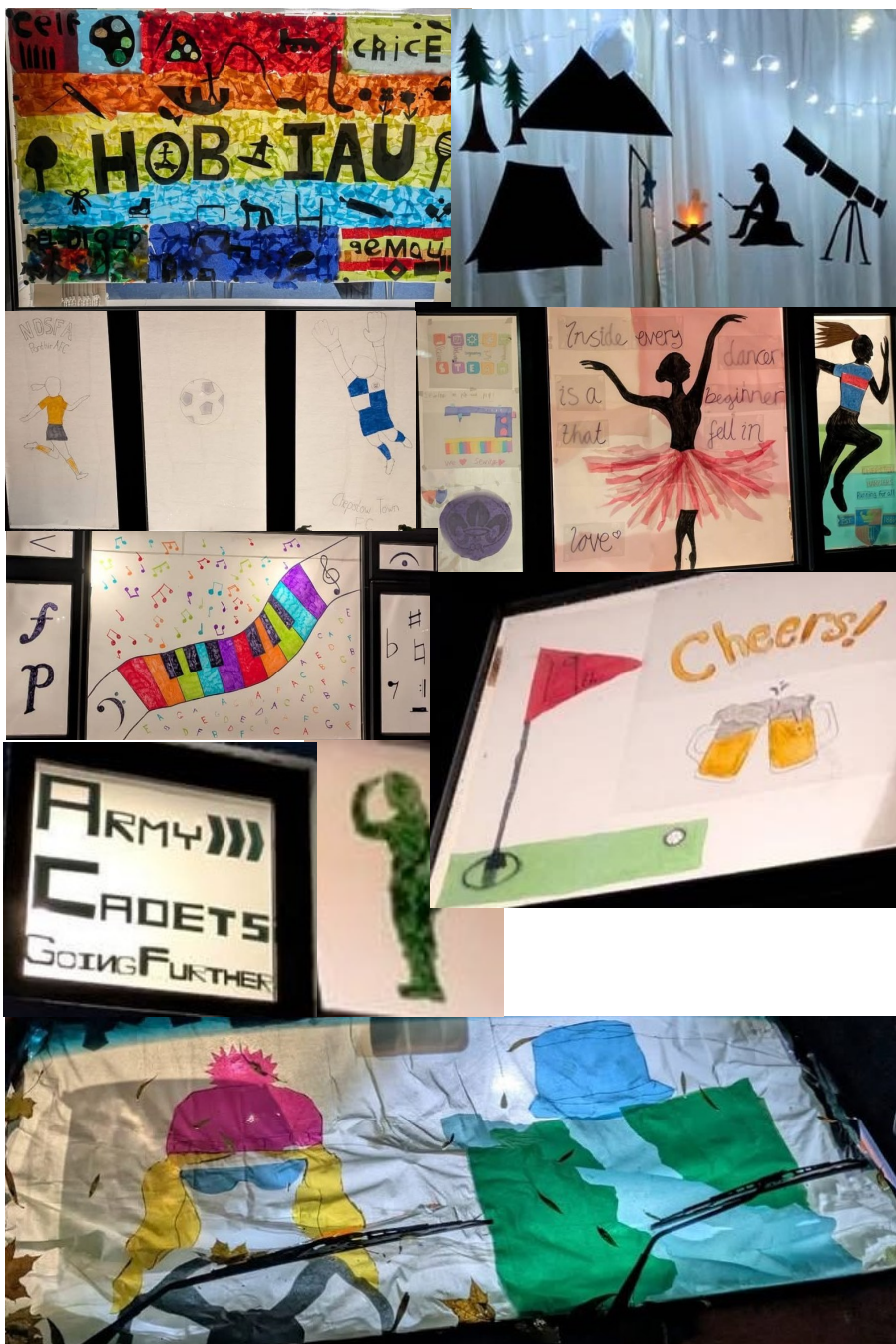
The weekend of 18th and 19th October brought another fantastic Shamble event. With a theme of 'hobbies', windows, houses and the phone box were decorated with images of sports, nature, puzzles, music and more. With quizzes, bell ringing and some live music thrown in too, those attending were treated to some fantastic artwork and a chance to relax with friends and family as they explored the windows and refreshments at the rec hall.

Many thanks to all those who participated, whether that was decorating windows, performing artworks or attending. And thanks too to the volunteer team behind the scenes making it all happen.















SHIRENEWTON COMMUNITY COUNCIL

Please find extracts from the minutes of the monthly meeting held 6th October 2025

Items for Planning – 1 Item

STR066 Goss Hawk Coffee, Wentwood.

Cllrs had no objection to this matter.

New Councillor - Co Option Council discussed and voted to accept S Todd's application for Councillor for Shirenewton and Mynyddbach. **Action** Clerk to forward relevant information.

Memorial Clock Repair: Cumbria Clock Co are due to attend this week, DCC awaiting update from them regarding the inspection and schedule of works. **Action** none

Funded ANPR update: Confirmation received from D Counsell that the camera will go ahead, awaiting MCC to instate power supply. **Action** none

Traffic events. Go safe visited the village with speed testing on the 6/10/25 however it was noted that this was a quiet time. Speed loops to be placed in village to record traffic speeds. It was confirmed that the speed limit coming towards MynyddBach from Chepstow will be 40, awaiting road surfacing before this is actioned. **Action** none
No reports of speeding witnessed in the area or near misses.

Memorial Path & Wreaths – Quote received. **Action** Clerk to arrange works during the next few weeks. **Action** Clerk to purchase 4 wreaths for SCC.

COUNTY COUNCILLOR REPORT

County Councillor Brown advised:

Cabinet on the 17th of September 2025

The meeting covered reports on the Housing Support Grant future programme, the Monmouthshire Local Area Energy Plan, the County of Sanctuary Strategy and Real Living Wage Accreditation.

In 2024/25 in Monmouthshire, there were 403 homeless applications with 160 in temporary accommodation.

The Monmouthshire Local Area Energy plan produced by ARUP was about achieving net zero by 2050, the report was just noted. There was no clear indication of where the billions of investment would come from. Some of the targets identified in the LAEP include: The installation of 41,000 heat pumps. The installation of 23,000 public EV charge points. 1.8GW of

ground mounted solar PV. The installation of rooftop solar PV on 43,000 rooftops.

Approval was also given for the County of Sanctuary report and the real living wage accreditation in order to cover all the Council's suppliers as well as MCC employees.

The reports can be found at the following links:

<https://democracy.monmouthshire.gov.uk/ieListDocuments.aspx?CId=144&MId=6106>

County Council on the 18th of September 2025

The County Council considered a report on the Council's self-assessment for 2024/5, together with a number of motions and questions. There was a motion on the Greater Gwent Pension scheme reviewing its own investments and requesting that those of the Greater Gwent Pension Fund are reviewed to identify any direct or indirect holdings in companies that are supplying arms, military technology, or logistical support which enable breaches of international law in Gaza.

There was a motion on footway improvements to make Monmouthshire more age friendly. There was a motion on supporting the Bridges Centre in Monmouth to have an affordable and fair rent from the Council. There was also a motion on setting out plans to tackle surplus places in the Monmouth and Chepstow clusters having first fully engaged with schools and the local community in developing such plans.

In addition, a motion received approval that this Council believes that Monmouthshire families should not face such high childcare costs and this Council therefore resolves to write to Welsh Government to call for an extension of the current childcare offer to match the entitlement in England by providing free childcare from nine months old.

The reports and debates can be found at the following link:

<https://democracy.monmouthshire.gov.uk/ieListDocuments.aspx?CId=144&MId=6106>

Performance and Overview Scrutiny Committee 23rd September 2025

Revenue Budget

The Committee covered reports on the Revenue budget update for 2025/6, with the following findings:

That Cabinet note the forecast revenue budget overspend of £533,000, representing a forecast 0.2% variance against the approved budget for the year.

That Cabinet note the budgetary risks that are inbuilt into this forecast, namely, the volatility of demand for high-cost services, particularly in Adults & Children's Social Care; Higher inflation levels currently being experienced than originally budgeted for; The risk of further non-delivery of the £10.7m of budgeted savings targets, with services currently forecasting 92.1% delivery.

The trend of reducing debt recovery, particularly within Council tax and Social Care where there has been a slowing down in collection rates, and

where there are increasing numbers of discounts and exemptions being awarded. The potential impact upon the Council's financial resilience from the forecast increase in the cumulative schools' reserves deficit that is being carried on the Council's balance sheet.

Cabinet notes that confirmation has been received for funding related to the increased cost of Employers' National Insurance Contributions, resulting in a funding shortfall of £811k or 24% compared to the actual cost increases. The Council will use its contingency budget of £850k to address this shortfall, as reflected within this forecast.

That Cabinet note the forecast increase in the deficit on cumulative schools reserves as outlined in Appendix 4 of this report of £2,835,000. This would result in school balances ending the financial year in a deficit of £6,926,000, with eighteen of thirty-five schools forecast to be in a deficit balance.

That Cabinet note that schools which are budgeting to end the 2025/26 financial year in a deficit balance are required to bring forward recovery plans by October half term to ensure that the proposed actions to address their budget shortfalls are instigated.

Other Reports

The committee considered the Chief Officer of Social Care Annual report and the Safeguarding Annual report.

All the reports can be found at the following link:

<https://democracy.monmouthshire.gov.uk/ieListDocuments.aspx?CId=305&MId=6158>

Place Scrutiny Committee on 25th September 2025

The Place Scrutiny Committee considered a report to scrutinise the content of the RLDP Consultation Deposit Plan report before it went to full Council. Appendix 1 provides the main report and there are numerous supplementary documents. There was an open public forum where contributors expressed concern about particular sites as well as developer comments and representatives from the Monmouthshire Housing Association about the need for affordable housing. One of the public speakers commented on the fact that the vast majority of consultation responses were answered with no change needed. This happened despite over 4000 responses being received.

There were 320 objections to the Moun-ton Road site at Chepstow, the highest number and 95 objections to the site for 26 houses in Shirenewton. The response of the Deputy Leader to the concern about little change being made as a result of this consultation was that the planning Inspector would look at it at the examination stage of the plan. The Deposit plan will be considered by full council on the 23rd of October and if approved would then go to a later examination stage.

The reports, public contributions and the debate can be watched here:

<https://democracy.monmouthshire.gov.uk/ieListDocuments.aspx?CId=305&MId=6158>

People Scrutiny 30 September 2025

The Committee considered reports on the Whole Authority Well Being and Prevention Strategy and the Community Meals. The cost of the community meals is subsidised by the Council. The report details can be found at the following link:

<https://democracy.monmouthshire.gov.uk/ieListDocuments.aspx?CId=305&MIId=6158>

Multi- Agency Meeting on the 29th of September 2025

The road safety grant will allow for the speed limit to be 40mph rather than 60mph from the Chepstow side to Mynyddbach. It will start from the Chepstow end where the road starts to bend. The reason for the change is due to road traffic accidents and the number of bends in this route and as a road safety measure. The change in speed limit will not be implemented until the first part of 2026 due to using a specialised road surface near the bends.

In view of concern about speeding in Shirenewton village, checks will be undertaken on a date in October in Shirenewton village with both the police and fire service in attendance.

It was also agreed with the highways representative that loops could be placed on the road to measure the speed. It was suggested that the Shirenewton community councillors could suggest the best location for the loops by what's 3 words. It is best if they can be attached to a post but can be screwed to the road.

One of the local PCSOs has been successful in the interview process to become a PC. It is expected that new PCSOs will be appointed in November but there will be a 2-month gap for training. This will limit obtaining police monthly reports and attendance at any community council meetings until the first part of 2026.

Police report – No report received due to a change in SPCO in the area.

To agree the date of the next meeting

Councillors agreed the date of the next meeting on **Monday 3rd November 2025 at 7.00pm** by public meeting in Shirenewton Recreation Hall or remotely via Google meet

Contact the Clerk to the Community Council

E-mail: shirenewtoncc@gmail.com

Mobile: 07410 580961

The Shambles Cookery Questionnaire

This was the quiz that I cooked up for The Shambles.
So, what do I like to bake? (Answers are near the
back of the mag)

- 1 Jack gets into a flap!
- 2 Bakers make these for the squirrels.
- 3 The Scouts, Cubs and Guides will have to wait for these delicious chocolate
- 4 Not witchy cakes, not wizard cakes, not pixie cakes but cakes!
- 5 Fruit, cheese or plain, they sometimes rhyme with John's, they sometimes rhyme with Jones.
- 6 Not long bread, not tall bread, its
- 7 Cheddar with dry grass?
- 8 Do you think puffins like?
- 9 Teisen made in Cymru maybe?
- 10 These are not made in a saucer.
- 11 The Queen of Hearts made some but then they got stolen.
- 12 And something for an orange vegetable friend!

Glynis MacDonald



Newport Cathedral
Cadeirlon
Casnewydd

ST WOOLOS SINFONIA

Autumn Concert 2025

7:00 PM Saturday
1 November

Newport Cathedral

Conductor
Rhys Herbert

Soloist
Teagan Craggs

Mozart
Overture to Marriage of Figaro

Mendelssohn
Violin Concerto

Haydn
Symphony No 104 'London'



Tickets £15
(under 16's free)
via the website
or at the door

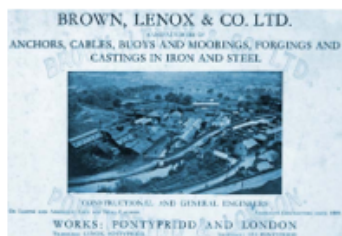


www.stwoolossinfonia.com



25 places of world significance within 25 miles of Shirenewton

9. The Chains of Pontypridd



Twenty five miles West of Shirenewton is a supermarket beside the main A470 Cardiff to North Wales Road at Pontypridd – but it wasn't always a supermarket. On that site from 1816 until 2000 AD stood one of the most important industrial centres in the world – the Brown-Lennox Chain factory. You all know this factory and its output. I will prove it to you but, first, let's clear up a confusion. The address of the Brown-Lennox chain factory in the 1820s through to the 1850s was Newbridge, Glamorgan, South Wales – 'Newbridge' was named after the famous stone arch bridge in the town built by William Edwards in 1756 which was thought to be the world's longest span bridge in 1756 although in fact it was the world's 4th longest span but still quite an achievement. But there already was a town called Newbridge in neighbouring Monmouthshire so in the 1850s they renamed the town 'Pontypridd' still keeping the reference to the bridge 'Pont' but 'bridge by an earthen house' - *Pontypridd*.

The Chain Works was the factory of Captain Sir Samuel Brown RN who pioneered the use of chains rather than ropes in the Royal Navy and managed to secure the rights to refit all the Royal Navy's ships (by far the largest navy in the world at the time) with chains. He didn't stop there but went on to the newest innovation of the time – the suspension bridge and in 1820 Samuel Brown built the first suspension bridge in Europe (and now the world's oldest) across the River Tweed between Scotland and England near Berwick upon Tweed and it was held up by chains made by Brown's chain works at Pontypridd (although at the time Pontypridd was called Newbridge!).

Had the contract for Chepstow Bridge (1816) been let in 1818 rather than 1814 Chepstow wouldn't have had a 5 arch iron bridge but would almost certainly

Vacancy on Shirenewton Community Council

Shirenewton Community Council has 1 vacancy for a Councillor in the Shirenewton & Mynyddbach ward

If you think you would like to be a Councillor and are over 18 years of age, contact the Clerk by email at shirenewtoncc@gmail.com

What is a Councillor?

Councillors are elected to represent an individual geographical unit on the council, known as a ward or parish. They are generally elected by the public every five years. Between the elections if a Councillor seat becomes available it can be filled by the Council Co-opting the applicant onto the Council. 1 seat for Co-option is available.

What do Councillors do?

Councillors have three main components to their work.

1. **Decision making** – Through meetings and attending committees with other elected members, councillors decide which activities to support, where money should be spent, what services should be delivered and what policies should be implemented.
2. **Monitoring** – Councillors make sure that their decisions lead to efficient and effective services by keeping an eye on how well things are working.
3. **Getting involved locally** – As local representatives, councillors have responsibilities towards their constituents and local organisations. These responsibilities and duties often depend on what the councillor wants to achieve and how much time is available, and may include:
 - Going to meetings of local organisations
 - Going to meetings of bodies affecting the wider community
 - Taking up issues on behalf of members of the public

How much time does it take up?

Quite often councillors say that their duties occupy them for about an hour a week. Obviously, there are some councillors who spend more time than this – and some less, but in the main, being a community councillor is an enjoyable way of contributing to your community and helping to make it a better place to live and work.

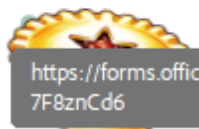
You will be supported in your role and will be expected to undertake training. You should be comfortable working electronically. You should have a positive outlook and a can-do attitude and be willing to work as part of a team. If after reading this notice you are interested in applying, please contact the clerk to the council using the above details.



You are invited to our first...

Community Carol Service

**15th December 6:00pm
at Shirenewton Church**



**Shirenewton Primary School's Pupil
Leadership Team and
Rev Zoe would like you to join us for
some carols, with refreshments
afterwards.**

**Our School Choir will also be
performing**

**If you would like to join us, please scan
the QR code or click on the link
<https://forms.office.com/r/7F8znCd6>**



have had Brown's first single span suspension bridge, because Chepstow desperately needed a single span bridge to cross the world's highest tides but this wasn't available in 1814 or 1816. Brown's chain works was only 25 miles from Chepstow. Brown's 'Union Bridge' built 1819-1820 was 300 miles away.

But I said that you would know the work of Samuel Brown and his chain works at Pontypridd and I haven't proved that yet.

Brown-Lennox made chains for the largest ships in the world for over 100 years. The anchor chains and launching chains for battleships and the largest ocean liners were made at Pontypridd. In the 1850s shortly after Isambard Kingdom Brunel had built his rail bridge at Chepstow (*last month's article*) he embarked on building the largest ship the world had ever seen – the *SS Great Eastern* – to be built on the Thames at Milwall on the Isle of Dogs in East London opposite Greenwich. This ship was 7 times the size of the world's largest ship at the time (also built by Brunel). It was phenomenal. So great was the world's interest in the building of the ship that the London Illustrated News sent a photographer (photography had only just started) to photograph every stage of the construction of this mighty Leviathan on the Thames – by far the world's largest ship. The photographer was Robert Howlett.

In 1857 Robert Howlett wanted to show the detail and realities of construction and show Brunel surrounded by the industry of his own invention. He asked Brunel to stand in front of the launching chains for the world's largest ship.

And the rest, as they say, *'is history'*!



I K Brunel 1857 by Robert Howlett

One of the most famous and iconic images of the world's industrial revolution. The heavy chains that made Howlett's picture famous were made at Brown-Lennox, Pontypridd, South Wales – 24 miles from Shirenewton. I said you would know them. Also, the masts of this great ship, the *SS Great Eastern*, were made 4 miles away at Chepstow! Brunel is standing in front of the chains shown [in](#) the picture of the *SS Great Eastern* at the beginning of this article.

John Burrows Next month 10. *The Viaduct over the River Ebbw at Crumlin*

Shirenewton WI

Readers of Shirenewton Parish Magazine will be familiar with the articles by Webmaster David Cornwell on, among other topics, Cyber and Online Security.

This was the title of his talk to the ladies of Shirenewton WI, where he opened our eyes to all the risks that using our phones, laptops and other devices on the internet can bring.

We were given 7 rules to help us stay safe.

1. Strong passwords and password management
2. Two factor authentication
3. Security suites and virus protection
4. Updating the operating system
5. Be wary of links, downloads and attachments
6. Lost or stolen phones
7. Backup



David outlined the issues with malware, viruses, phishing and vishing attacks, Pig butchery related to investment fraud scams, romance and dating scams and marketplace scams. In 2024, £1.2 billion was lost to scams, with Citizens' Advice estimating that over 9 million people were affected. All ages are targeted however, older, wealthier individuals are particularly vulnerable, with 60% of the over 65 age group having been approached by scammers.

Strength of passwords is all important. We were given an example of a secure password which used capital letters, lower case, numbers and special characters, e.g., TheRoadtoUskistheB4235. It is estimated that it would take hackers 294 million years to crack this. If the numbers were left out this drops to 23 thousand years and if the full stop is also omitted it would take 31 years. David's warning is not to use simple passwords and **definitely not** to use the same password for multiple sites/applications. A different password for every site is safest and using a Password Manager, which remembers and generates passwords, is recommended.

This is only a small part of the advice and information given to us in David's talk, which covered each of the 7 points in detail. We will all endeavour to be a lot more careful online and when using our phones and tablets, following David's revelations.

Our next meeting is at Shirenewton Recreation Hall on Thursday 13th November at 7:15pm when we will be trying our hands at Needle Felting, with Diana Such. All are welcome to join us. Please just come along or contact Angela Gray at angela.deepweir@btpenworld.com or Jane Butterworth at janeb247@gmail.com (641704).

Movember is an annual event involving the growing of a moustache during the month of November to raise awareness of men's health issues such as prostate cancer, testicular cancer, mental health and suicide prevention. Movember was born in 2003 when two mates in Australia decided to grow a moustache and raise some money for charity. Movember is now a global event raising millions each year.

Gentlemen, why not treat your lady this
November by growing a moustache
"it's sure to tickle her fancy"

Open to all - guys / girls / young / old / whatever
If you self identify as a moustache, now is your time to shine.

If you don't want to grow one, get a stick-on,
I know that's what my wife will be doing!



Movember Party Night

At the Carpenters Arms
You're invited

Join us on 29th November from 7pm onwards

Bring your Mo (real or stick-on)
And enjoy food, beer and live music
Whilst raising money for this charity

You can donate by raising sponsorship or simply making a donation for the privilege of being part of our illustrious team - **The Shire Ticklers**.

The Shire Ticklers' aim is to raise money for a great cause whilst having a laugh and remembering an old friend and former Movemberer, Gary Williams.

To donate....use QR code

Or contact me, Tony Prout, on
tony.prout@hotmail.co.uk 07517 806159



GARDENING CORNER

Autumn seems to have arrived all of a sudden, this year. The continuing dry weather and warm temperatures obviously lulled us into a false sense of security as leaves (and acorns) started to tumble from the sky. Predictions were for a riot of colour as Autumn arrived, but I think this year may be a disappointment. Yes, a few species such as beech and the various maples, have turned a riot of colour, but others like oak, sycamore, ash (if they are still alive, and cherry for example seem to have leaves that have just seemingly shrivelled up, and then succumbed to the first storm, and now the second of the season. We have started making major changes in the garden, including reducing the numbers of raised beds, or just their size. All this in an effort to 'future proof' things here in case we remain living here longer than we had planned. We simply don't need to feed a whole family every day anymore, and of course neither of us get any younger! I have written over the years about trying to grow crops on a successional basis. This is made more difficult of course because of the many F1 hybrids, when it comes to seed choice. You get the benefit of quality crops, but the downside, is that they are all ready for harvest within the same week or so, because that is what they do. The simple answer, is to grow less of everything, so sow seeds little but often. I in particular, have always struggled with this simple idea! What if the seed doesn't germinate, or some get attacked by pestilence or disease? The last few months, I have simply tried to put theory, into practice. To make this work more effectively, I have reduced the size of the net cloches that we use to protect vegetable crops from various flies, moths and butterflies whose young feast on our veggies, from approximately five feet wide (and around four feet high) and a length of either ten feet or fifteen feet. The length fitted with that of the raised beds. It all worked well, but the longest cloches were not easy to move about. Instead, they have all been cut down to five feet long instead, just the right size for say six or nine brassica plants, such as calabrese, cabbage, cauliflowers etc. I am now sowing enough seeds to fill the one cloche at a time – usually with two separate varieties, with a sowing time of every three weeks or so. Planting just three calabrese and three cauliflowers allows for a plant each week and loss of one, providing approximately one meal each week of a different brassica vegetable, the lost plant allows for chilli or spag bolognaise days in between! Obviously crops like carrots, beetroot, leeks etc, will stand for a lot longer than brassicas, before harvesting, but again I will sow one entire cloche, but spread the sowing over say four or five weeks instead of three. It has been difficult to adjust to this regime, but thus far it has started to work quite well. Seed sowing or planting at the moment is limited, but there is still a bit to do. I'm currently sowing sweet peas and broad beans for an early crop of each next spring. I'm also sorting through the stored garlic and shallots to pick out some ideal 'sets' for early summer harvesting. As I have mentioned before, these will be planted up in 5 inch pots of compost which will be watered and started off in

the tunnels, or big greenhouse. They will then be planted out into prepared beds in the large tunnel, probably at the end of march. Both will be ready for harvesting, probably in June, when they will be harvested, and then replaced with one of the salad crops.

This time of year, is the main time to start on all of the clearing up jobs, pruning and cutting hedges. I have fallen behind this year as normally I would have started several weeks ago with these chores, but a planned hospital short stay, later turned into sepsis. So, a month slipped by without me really noticing! A spell of decent weather before Christmas would therefore be a bonus. Hedge cutting, strimming and grass cutting will be high priority on the list, followed by weeding over flower borders, with dividing crowded plants, or digging up any annuals such as dahlias and gladioli corms, so they can be dried and stored over the winter, ready for replanting next year. We had a sharp frost last night. Although it didn't do any damage to the plants in the unheated greenhouse or tunnel, it won't do the tender crops such as tomatoes and peppers any good. A quick look this morning, identified one last picking of the big mamma tomatoes that we use for making passata sauces. These were soon gathered in, and are currently slow cooking in a large Mazlan pan on the stove, along with chopped onions and garlic, basil and bay leaves. The smell is starting to percolate down to the lounge, so time to go and turn the heat off, and let cool, before dividing up into individual pots for the freezer. We have been inundated with top fruit this year, as has anyone with an apple or pear tree. It is awful to see all the fruit on the floor, but it will be eaten no doubt as colder weather arrives. We have stored as much as we can, either by cooking and freezing, or in boxes in store. Most of the pears are cooked in mulled wine, and frozen. We have enough to provide one pudding of pears every week for the coming year, so think it is time to call a halt for this year!

As usual, happy gardening until next month, Steve and Felicity Hunt.



Music for an Autumn Evening
Chepstow
Male Voice Choir

**At St Thomas a Becket Church,
Shirenewton**

Saturday 1st November
7pm

Tickets £10

**(Including a
glass of wine)**

Available in advance from

Claire Lewis - claire.lewis@btinternet.com

or

Wendy Montague - 01291329481

Or on the door on the evening.

Come along and support a local choir and the church

SERVICES AT SHIRENEWTON CHURCH IN NOVEMBER

Sunday 2nd November 10.00

Eucharist with Hymns

Sunday 9th November 10.00

Remembrance Sunday.
Act of Remembrance at village War Memorial.
Laying of wreaths followed by Family Service.

Sunday 16th November 10.00

Morning Prayer with Hymns.

Sunday 23rd November 10.00

Eucharist with Hymns

Sunday 30th November 10.00

NO SERVICE AT SHIRENEWTON
5th Sunday Service at Mathern Church

All are welcome to join us and enjoy refreshments in the church rooms after Sunday morning service

Information of all services at the twelve local churches that make up the Severn-Wye Ministry Area (MA) can be found at www.severnwyema.co.uk and elsewhere in the magazine

ST TEWDRIC'S ABSEIL

There is to be an abseil at St Tewdric's on 29th November, in aid of the church's tower repair fund and of SARA.

If you would like to take part, here is the link with all the information you need about the event and about how to register:

<https://register.enthuse.com/ps/event/StTewdricsTowerAbseil>

Please will you forward this to anyone who you think might want to take part - thank you.

Best wishes, Anne Octon

THE FASTEST GROWING SPORT IN THE WORLD HAS ARRIVED IN CWMBRAN!

ANY AGE . ANY FITNESS LEVEL . NO EXPERIENCE NEEDED . FUN GUARANTEED



A MIXTURE OF TENNIS AND SQUASH,
PADEL IS THE SECOND MOST POPULAR
SPORT IN THE WORLD TO FOOTBALL.

PLAYED IN DOUBLES, PADEL IS GREAT FOR
SOCIALISING WITH FAMILY AND FRIENDS.

FIND US AT THE WELSH PADEL CENTRE, WOODLAND ROAD SPORTS & SOCIAL CENTRE, CWMBRAN, NP44 2DZ

Wyefield Windows and Doors Ltd

- Composite Doors
- Misted Glass Replacement
- Upvc Windows & Doors
- Window & Door Repairs
- Aluminium Windows & Doors
- uPVC Fascia Soffit & Guttering



01600 717717
01633 495095



info@wyefieldwindowsanddoors.co.uk

SHIRENEWTON LOCAL HISTORY SOCIETY

Registered Charity No. 1090167

An excellent talk entitled Piercefield and Nathaniel Wells was the title of our first talk of our new year. The speaker for the evening was Annie Rainsbury, everyone agreed it was a first class talk a very local history subject given to a full house. A good way to start our year.

DATES FOR YOUR DIARY

Tuesday, 28th October, Monthly Meeting, 7.30pm, Church Room, Title of Talk: Mari Llwyd, given by Sue & John Exton

Wednesday, 12th November, Archive Meeting 2.00pm

Tuesday, 25th November, Monthly Meeting, 2.00pm, Church Room, Title Talk: The Morgans of Tredegar House, given by Roger James.

Note: *Our November meeting will take place at 2.00pm, at the Church Room.*

Wednesday, 10th December, Archive Meeting 2.00pm Church Room

Tuesday, 16th December, Visit/talk/tour to St Mary the Virgin, Caldicot 5.30pm.

Afterwards, supper at The Castle Inn, Caldicot.

Book of the Month: *Patronage & Power in the Welsh March, One Family's Story, David Stephenson.*

Archive of the month: *The society's map collection, 3 editions of the 25 inch parish map.*

Why not come and check out our range of local history books, documents, tithe and census records and much more. Our Archive Meetings are open to everyone not only members. Check out the dates above.



SHIRENEWTON VILLAGE MARKET NEWS....

CHRISTMAS MARKET

22ND NOVEMBER AT 11.30 – 1.30

AT THE REC HALL.

We're back with our fabulous Christmas Market on Saturday 22nd November at 11.30 – 1.30. Lots of lovely stalls & our ever-popular café with delicious coffee & cakes.

Come along & buy your Christmas wares, take a pit stop & catch up with friends over refreshments.

Free entry.

Please note the new time – later start so we don't clash with Saturday morning football!

A festive poster for the Shirenewton Village Christmas Market. It features a red background with a green border decorated with white stars and small green trees. A red bow is at the top center. The text is in white and green, announcing the market on Saturday, November 22nd, from 11.30 to 1.30 at The Rec Hall. It mentions free entry and lists food, crafts, gifts, and more.

**SHIRENEWTON
VILLAGE
CHRISTMAS
MARKET**

SATURDAY NOVEMBER 22nd
11.30 – 1.30

AT THE REC HALL

FREE ENTRY

FOOD • CRAFTS • GIFTS • & MORE!

A poster for a knitting and crochet group. It features a light green background with a large ball of yarn and knitting needles. The text is in a mix of black and green fonts, inviting people to learn or practice their craft.

would you like to
knit & natter
or/
crochet & chatter

whether you would like to learn or
have been twiddling yarn for
years, bring your yarn and come
chat with like minded people

1st and 3rd thursdays
monthly in the Carpenters
Arms at 8pm

Holy Communion in the Welsh language



O ddydd Sadwrn Gorffennaf 12fed ac yn fisol bob ail ddydd
Sadwrn am 9.30 y bore, ymunwch â ni ar gyfer Cymun Bendigaid
yn yr iaith Gymraeg yn eglwys y Santes Fair Cas-gwent.

9:30am on the second
Saturday of the month
at St.Mary's Chepstow
Starting on 12th July

First language Welsh and
Welsh learners, all welcome!
Service sheets will be
bi-lingual. Excellent
opportunity for learners to
practice listening, reading
and speaking skills!

For more info please contact
Zoepimentel@cinw.org.uk



DATES FOR YOUR DIARY

NOVEMBER

Saturday 1 st 7.00 p.m.	Chepstow Male Voice Choir concert St Thomas à Becket Church, Shirenewton
Saturday 1 st 7.00 p.m.	St Woolos Sinfonia Autumn Concert Newport Cathedral
Monday 3 rd 7.00 p.m.	Shirenewton Community Council meeting Shirenewton Recreation Hall
Sunday 9 th 10.00 a.m.	Remembrance Sunday Shirenewton War Memorial/Shirenewton Church
Sunday 9 th 10.30 a.m.	Remembrance Service Earlswood and Newchurch West Village Hall
Thursday 13 th 7.15 p.m.	WI meeting—Needle Felting with Diana Such Shirenewton Recreation Hall
Saturday 22 nd 11.30 a.m.—1.30 p.m.	Christmas Market Shirenewton Recreation Hall
Saturday 22 nd	Chepstow Choral Society—Dream of Gerontius
Saturday 29 th 09.00 a.m.	Abseil to raise funds St Tewdric's Church, Mathern
Saturday 29 th 1030 a.m.—1.30 p.m.	Christmas Craft Fair Earlswood and Newchurch West Village Hall
Saturday 29 th 7.00 p.m.	Launch of Movember to raise funds The Carpenter's Arms

DECEMBER

Saturday 13 th 7.00 p.m.	St Woolos Sinfonia Concert St Deiniol's Church, Itton
Saturday 13 th	Christmas Quiz Earlswood and Newchurch West Village Hall
Sunday 14 th 3.00 p.m.	Christmas Music from the Chepstow Choral Society St Mary's Priory Church, Chepstow
Monday 15 th 6.00 p.m.	Community Carol Service St Thomas à Becket Church, Shirenewton
Saturday 20 th 8 p.m.	Sing-Along-a Santa Bash The Tin Shed, The Huntsman Hotel

severnwyema.co.uk

**The Tin Shed Bar,
The Huntsman Hotel, Shirenewton
- Proudly Presents**

The Third Traditional Shirenewton Festive Sing-Alonga-Santa **BASH.**

**Back by popular demand, after a 12 month
absence . We haven't had this much fun
since last Xmas. A community event
guaranteed to spread goodwill and joy to
you and your kin, this Yuletide!!**

Absolutely no talent or experience required.

**Just throw on a
Festive Sweater,
Bobble Hat, & Scarf -
dig out something
musical to hit, blow or
shake and turn up
prepared to SING.**



Saturday 20th December 2025

Singing starts at 8:00pm-ish!!

Dr Rachel Cross a
(DipABRSM, CELTA, LMusTCL,
MISM, BA (Hons), MA, PhD, FHEA)

both itself and friend. And

English tuition from
secondary school level
to postgraduate

and
music theory, piano and strings
tuition

And it must follow, as the

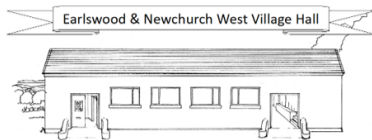
night the day. Thou canst

not then be what you man.

07906 195098

rachelcross.co.uk

rachelecross6@gmail.com



Remembrance Service

Join us to remember those who've served - **Sunday 9th November**
10.30am. Hot drinks and cake available following the service.

Christmas Craft Fair

Saturday 29th November

10.30am – 1.30pm

Browse blacksmith's wares, stained glass, dried flowers, knitted toys, handmade quilts, cards, wood-turning, honey, candles, wreaths, crochet, Avon, and more!

❖ Café serving drinks and a selection of cakes

Upcoming Events

Saturday 13th December **Xmas Quiz**
2026

Saturday 16th May **Plant and Cake Sale**

Visit www.earlnew.com for more information about the Hall & facilities.
We have a mailing list! Email info@earlnew.com to join!

LIFE SAVING DEFIBRILLATOR

DEFIBRILLATOR LOCATIONS

(Cabinets do not require codes, they are unlocked although they have a key pad)

Carpenters Arms (on the Usk road)

Huntsman Hotel (on the Usk road)

Recreation Hall (Shirenewton village)

The Tredegar Arms (The Square, centre of Shirenewton)

Great House Farm complex (off Old Road), Earlswood (north)
[repair.decrease.fussy]

Earlswood Hall (Earlswood)

Shirenewton School



Takeaway or Eat In

COME AND CHECK OUT OUR WEEKLY MENUS FOR A TASTEBUD TREAT OR TRADITIONAL COMFORT FOOD BY ORDERING A TAKEAWAY OR DINING IN.

TIN SHED

OPEN FROM 5PM
COME JOIN US IN
FRONT OF THE LOG
FIRE FOR A DRINK

WEDNESDAY

DELICIOUS VARIETY ON THE MENU



FRIDAY

A WIDE RANGE OF FISH & CHIPS MENU OPTIONS

CALL 01291 641521
CALL OR TEXT
07961 522393
OR 07766 237915

SUNDAY LUNCH

£14 COLD OPTION
HEAT YOURSELF AT HOME

£16 HOT OR DINE IN

MENU CHOICES ARE ALL SUBJECT TO AVAILABILITY. REMEMBER TO CHECK OUR FACEBOOK PAGE AS MENUS CHANGE WEEKLY.



THE TIN SHED
WILL OPEN
SOON. KEEP
CHECKING
FACEBOOK.

THE LOUNGE
BAR IS OPEN.

SUNDAY LUNCH

£14 COLD OPTION

HEAT YOURSELF AT HOME

£16 HOT OR DINE IN



You can call us

01291 641521 | 07961 522393 | 07766 237915

TAKEAWAY OR EAT IN

OUR MENUS CHANGE WEEKLY

You can find us at

USK ROAD, SHIRENEWTON, NP16 6BU

You can contact us by email

HUNTSMAN.SHIRENEWTON@GMAIL.COM

You can check out our website

HUNTSMANHOTEL.CO.UK

You can follow us on Facebook

THE HUNTSMAN HOTEL NEW PAGE

WE ARE AVAILABLE FOR:

- ANNIVERSARIES
- HOG ROASTS
- PARTIES
- WAKES



OUTSIDE CATERING SPECIALISTS FOR 40 YEARS

Value of the Month

Freedom

Harvest Festival

We were overwhelmed by the donations received for our harvest festival, a huge thank you to our whole school community for making this such a success. We asked for donations of different items per day over the course of one week and all donations have been sent to Chepstow Foodbank.



Ymadrodd y penwythnos

Sut wyt ti?

Our Welsh phrase of the fortnight. Translation: How are you?

Reception - Week ending 3rd October 2025



We had an excellent week in Dosbarth Derbyn. We were extremely generous with our harvest donations and this led to many conversations. We discussed harvest and how our food is harvested by farmers. We also learnt the 'Big Red Combine Harvester' song.

We discussed being grateful, and shared what we are thankful for. Fantastic discussions!



Newsletter

Year 1 - Week ending 10th October 2025

In theme work, Year 1 identified the ways that water is wasted. We discussed ways that we can save more water at home.

In literacy we looked at what an adjective is and how we can use it in our writing.



Year 2 - Week ending 17th October 2025



Year 2 were so mature when looking at Floella Benjamin's story - 'Coming to England'. They showed empathy and developed some understanding around black history and racism.



Thank You



Thank you to all our families who helped us raise an amazing £933.11 back in May when we held our charity day, for the Kids Cancer Charity. We have received thanks from them for your donations.

Timetable from 1 September 2024

Saturdays

0712	0922	1200	1700
0717	0927	1205	1705
0725	0935	1213	1713
0726	0936	1214	1714
0727	0937	1215	1715
0734	0944	1222	1722
0741	0951	1229	1730
0747	0957	1235	1736
0755	1005	1243	1744
0803	1013	1251	1752
0813	1023	1301	1800
0820	1030	1308	1807
0824	1034	1312	1811

Sorry, there is no Sunday service on route 63

Just as I was gearing up to write this article, my phone rang. It was a number I did not recognise but, as I was expecting a call from an unknown number, I answered it. All I got was an automated voice saying 'Please add this number to WhatsApp'. Hmmmmmmmmmm – not sure I want to do that.

To confirm my suspicions, the first thing I did was ask Mr Google which told me that this is scammers attempting to bypass WhatsApp's built-in security and, if you oblige, would lead to scammers identifying you as a gullible target. So, if you get a call like this, you should not add the number to your contacts or WhatsApp but block the number and report it as spam. These latter options will likely pop-up on your phone but, if they don't, simply click on the icon (not the number) to bring up these and other options.

In other news, I had the pleasure of giving the Shirenewton WI a talk on Cyber & Online Security last month. I covered off the basics arounds passwords, backups, not clicking on random links, malware and phishing before introducing them to the term 'pig butchering scams', which is where victims are 'fattened' up prior to being butchered. The scam consists of several stages:

1. Pig Hunting (Initial Contact): The scammer "hunts" for victims, often on dating apps or social media, using fake profiles to make initial contact.
2. Pig Raising (Building Trust): The fraudster and victim establish a relationship over time, with the scammer using social engineering tactics and fake emotional connections to build significant trust.
3. Pig Butchering (Investment Fraud): Once trust is established, the scammer persuades the victim to invest in a fake investment platform, usually cryptocurrency or stocks and shares. They will show the victim fabricated "gains" on the fake platform, pressuring them to invest more and more money.

Post Butchering: Eventually, the scammer will vanish, taking all the victim's money and often leaving the victim with a fraudulent or non-existent account balance.

A few days after this presentation, the American news website CNBC had a headline which screamed: DOJ seizes \$15 billion in bitcoin from massive 'pig butchering' scam based in Cambodia

These pig butchering scams are very real and are sophisticated financial frauds in which victims can be fattened up over months and even years. Obviously, there are many other types of scam including Authorised Push Payment (APP) scams, Romance and dating scams, Social media marketplace scams, and 'Hi Mum' scams with AI voice cloning. I finished off the presentation by explaining that, using deepfake AI technology, scammers would only get more sophisticated, so everyone needs to constantly be on their guard. Yes, they are out to get you!

Last month, I noted that the EU was wrapping itself in all sorts of trouble with the controversial proposal for legislation called "Chat Control 2.0" to scan encrypted communications to detect child sexual abuse material (CSAM). Well, the update is that it seems that the proposal is currently stalled, with a key vote postponed indefinitely due to strong opposition from several EU member states, digital rights groups, and tech companies. Watch this space.

Also, last month, I noted that "Microsoft Will Stop Supporting Windows 10 on 14th October 2025. This means that there will be no more updates or security patches or anything really. If you continue to run a Windows 10 PC you will be opening the door to security risks". Well, it seems that Windows 10 is refusing to 'go gentle into that goodnight'.

It is amazing to consider that now, at the end of its life, Windows 10 still accounts for over 40% of active Windows installations (compared with ~49% for Windows 11) under intense pressure from the EU and others, Microsoft is providing 'Windows 10 Consumer Extended Security Updates (ESU)' for around £25+VAT for the 1st year and then doubling the price every year for three years. So, all is not lost. If you remain on Windows 10 it is probably worth enrolling in ESU. For details visit the Microsoft website and search.

Obviously, this is the sort of confusion scammers love. So, if anyone claiming to be from Microsoft call you offering you ESU, simply laugh and hang-up. Microsoft will not call you to offer this service.

Finally, The Register recently had a fascinating article on the danger that the low earth orbit satellites (such as Starlink) pose. In summary, the article notes that SpaceX is 'deorbiting' a couple of satellites daily and this number is only going to grow. It is estimated that each satellite's life expectancy is ~5 years and that, once up to the planned 30,000 satellites, it is expected that 5 satellites will be deorbited every day.

This is all tied into the 'Kessler syndrome', a scenario in which so many debris clutter Earth's orbit that one collision can trigger a chain reaction of further impacts, potentially making parts of Earth's orbit unusable for satellites. The article, which is well worth a read, is here:

<https://tinyurl.com/5yzw8jv2>

Safe browsing

David Cornwell
Webmaster

www.shirenewtonchurch.com



Rachel Mobile Hairdresser

Cut & Blow-dry
Tint
Hi-lights
Perm

Call 01291 329480

30 years experience – DRB checked

Oakfield Veg Boxes

Sown and grown using organic methods in Newchurch

Larges boxes £22 and Medium boxes £17

email leighayland@gmail.com

call on 01291 428604/07889 247361

Read more about us on Facebook
[@oakfieldgrowers](#)

*This is a fair share scheme where seasonal produce is shared among subscribers.
We guarantee a minimum of 8 items in the medium boxes (suitable for 2-3)
and 10 items in our large boxes*



Painter and Decorator
Quality work at sensible prices

07825232517



**MAKE YOUR
HOME WARMER
FOR WINTER.**



**Find out if your home qualifies for
the government backed grant.**

Energy-saving upgrades:



Solar
Panels



Loft
Insulation



Wall
Insulation



Smart
Thermostats



Heating
Upgrade



Battery
Storage



Who can qualify?

- ⚡ Low household income
- ⚡ Health conditions
- ⚡ Receiving benefits

WIZARDECO.COM

INFO@WIZARDECO.COM

01633 846 910

Hanbury Garage, Caerleon, Newport, NP18 1AA

YOUR LOCAL TRUSTED INSTALLER



Chepstow Choral Society

Musical Director – Graham Bull

Accompanist -- Richard Kubiak

CHRISTMAS CELEBRATION!

A Joyous start to the Christmas season!

**ST MARY'S PRIORY CHURCH,
CHEPSTOW**

**SUNDAY DECEMBER 14th
3.00pm**

ALISON WRAY - Soprano

ST JOHNS-on-the-HILL SCHOOL

A mix of sacred and secular items –much-loved carols, seasonal readings, and popular Christmas choral music. Tickets £10, (u/18s, students free) are available from Chepstow Bookshop, choir members - visit our website for further information. www.chepstowchoralsociety.org.uk

SINCE 1861

TREDEGAR ARMS

SHIRENEWTON



Now Open
Wednesday to Sunday
12pm to 11pm
tredegararms.com
01291 783600



ST WOOLLOS SINFONIA

CHRISTMAS CONCERT

Chamber Music - Carols - Readings

St. Deiniol's Church

**of Itton, near
Chepstow**

NP16 6BR



Sat 13th December 2025
7 pm

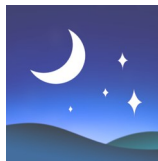
**Tickets (£15, students & under 16
years free) payable at the door**

Proceeds in aid of the church

www.stwoollossinfonia.com



STARGAZING



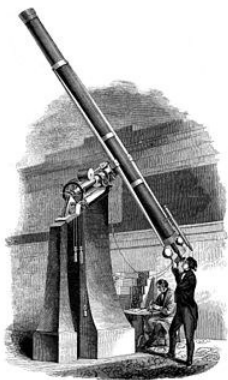
In the evening sky, looking south we can see the slightly yellow planet Saturn. Later in the evening bright Jupiter is rising above the horizon in the eastern sky. Before dawn, Jupiter is high and bright in the southern sky. On 1st November the Moon lies just to the right of Saturn and Jupiter is joined by the Moon on 9th November.

The seven stars of the Plough lie to the North in the evening. Those of us with particularly good eye-sight can see that Mizar, the star that is the second along the handle of the plough, is in fact a double-star.

The "W" of Cassiopeia lies nearly overhead. In Roman mythology Cassiopeia was queen of the ancient kingdom of Aethiopia. She was chained to her throne as a punishment for being boastful, and placed in the heavens to sometimes hang upside down. The band of stars making up the Milky Way runs through Cassiopeia.

The Milky Way is best seen from the countryside, away from city and even village lights. There have been no really large telescopes of the type used by professional astronomers in the UK for 40 years or more. This is at least partly due to the effects of poorly designed street lighting.

The Leonid meteor shower is due on the nights of 17th and 18th November – you may be lucky enough to see meteors, often called shooting stars, in the vicinity of the constellation Leo. Leo rises in the East around midnight. Meteors are caused by tiny grains of dust burning up as they enter Earth's atmosphere. The dust particles result from the break-up of comets, and travel in swarms around the Sun around the same orbit as the original comet.



FAIRTRADE NEWS NOVEMBER 2025

For more than 20 years I have bought, used (and sold!) Fairtrade products eg tea, coffee, chocolate, dried fruit, rice, sugar, coconut, rubber gloves, cards, handicrafts etc from many countries around the world – India, Bangladesh, Eswatini, Burkina Faso, Sri Lanka, Ghana, Mauritius etc. Particularly recently many people have shown their solidarity with Palestine by buying Fairtrade Zaytoun couscous, medjool dates, za'atar, soap, and above all olive oil.



The Fairtrade Foundation issued the following statement, dated October 2nd 2025 (so things have moved on as of October 23rd - albeit very slightly! I have also summarised some points)

FAIR TRADE STATEMENT ON PALESTINE

An urgent call to protect civilians in Gaza and the West Bank.

'When the new olive trees had grown, our land became a heaven. Then we were ordered to uproot them all. To us it feels like they want to erase everything that symbolises the Palestinian identity to forcibly displace us and drive us away from our land' Khitam, a woman farmer from Deir Ballout.

Zaytoun customers sponsored the planting of 2,000 young olive saplings in Khitam's village in the West Bank in 2021 after thousands of trees had been uprooted by occupation forces. Those trees had begun to flourish, but now the community faces destruction once again

As members of the Fairtrade movement, we are united in our belief that every person has the right to live and work in safety and determine their own future. Today, we raise our voices in solidarity with the people of Gaza and the West Bank whose futures are being deliberately dismantled.

The Fairtrade movement exists to support people across the world to build secure and sustainable futures. We deplore the violence of October 7th and its aftermath, which have deepened an already dire situation. In Gaza and the West Bank, the rights of people to work, trade and live free from fear are being stripped away.

For decades people in Gaza have endured blockade and suffering. In recent months, this has intensified to the point where communities have been denied the essentials of life: clean water, food, shelter, medical care at a scale that defies comprehension. Farmers in the West Bank, who are part of the Fairtrade community are facing escalating violence and displacement.

What is happening in Gaza goes beyond a humanitarian crisis. On 16th September 2025, the UN concluded that Israel has committed genocide in the Gaza strip. The use of starvation as a weapon of war, and the destruction of civilian, farming and trade infrastructure violates the principles of international law and the values we hold as a movement to protect and uphold human rights and enable people to earn a fair income or wage within safe working conditions.

We have worked with Zaytoun, a pioneering UK Fair Trade brand and Palestinian farmers for over 20 years, building economic resilience and hope in one of the most challenging environments. Today that hope is thwarted.

In GAZA WE CALL FOR

An immediate and permanent ceasefire and the immediate release of hostages

The full lifting of the siege and unrestricted access for food, water etc

An end to the use of starvation as a weapon of war.

An end to the expansion of military operations.

In the WEST BANK WE CALL FOR

A halt to settlement expansion and land confiscation

An immediate end to settler and army violence

Protection for farmland, irrigation and farming infrastructure.

The lifting of movement restrictions and checkpoints

Accountability for violations against farming communities.

I sincerely hope that by the time you read this statement in the November Parish Magazine the tragic situation will have improved.

Marion McAdam 641 316 msm316@gmail.com



Eileen O' Dwyer

Private Carer/Home help
07795 689791

THE BELLS

Each year Shirenewton holds an event called The Shambles where many families walk around the village just after dusk to view illuminated windows in houses around the village. Shirenewton bell ringers decided to open the tower to visitors for 2 hours during the Shambles but this year on Sunday only, because of prior commitments on Saturday. In the church we screened a rolling power point presentation giving information on the history and development of ringing and a little bit about how the theory and practice of bell ringing works today.

Over the evening in the region of 35 visitors came up the tower. Groups of up to four people were assembled downstairs they were then shown up to the ringing room where they could see the bells being rung, and then on up to the belfry to see the bells including a single bell being rung (earmuffs supplied).

We think the villagers and others from as far afield as Caerwent (no ringing bells in the church) and Wolvesnewton (just 3 bells in the church in need of refurbishment) appreciated an opportunity to visit the village bells and to chat to the Shirenewton Ringers. We will certainly be opening the tower next year during The Shambles.

We are approaching quarter peal fortnight as I write this so there may be a bit of extra ringing coming. We aim to get two of of newish ringers through their first quarter peals (1260 changes taking about 42 minutes to complete) – enjoy.

We practice each Friday evening starting at 7.30 pm. If you want to see what goes on then come and visit. New ringers taken from the age of ten years.

M.D.Penney.

October 2025

The Answers to The Shambles Cakey Quiz

- | | | | |
|---|--------------------|----|---------------|
| 1 | Flapjacks | 6 | Shortbread |
| 2 | Doughnuts | 7 | Cheese Straws |
| 3 | Chocolate Brownies | 8 | Muffins |
| 4 | Fairy Cakes | 9 | Welsh Cakes |
| 5 | Scones | 10 | Cup Cakes |
| 6 | Jam Tarts | 12 | Carrot Cake |

And sadly, there are no prizes!

THE
BATHROOM
SHOWROOM

AT



Check out
our fantastic
new product
displays.
Get inspired
today!

YOUR PERFECT BATHROOM IS CLOSER THAN YOU THINK

AT THE SCHOOL TRADING ESTATE IN CHEPSTOW

From taps to tiles, cloakrooms to family bathrooms,
and lighting to heating, we have it all.

Unit 1, The School Trading Estate, Chepstow,
Monmouthshire NP16 5PH

T: 01291 630643 M: 07469 402233

Book your appointment today!

By phone 01291 630643 or online at www.bathrooms.com



Trade &
Public
welcome



Free 3D
design
& planning



Free Tile
sampling
service

www.bathrooms.com

NEW ADVERTISING RATES TO ADVERTISE IN THIS MAGAZINE

CONTACT Bill Clark: 01291 641783; parishmagshirenewton@gmail.com

The editor reserves the right to print free content and free advertisements in black and white and at the size the page layout requires

New Advertising Rates for Commercial organisations with effect from 1st September 2025

12 months 10 issues

Quarter Page £65

Half Page £120

Full page £400

Advertising Rates for Commercial Organisations that support the Church and the local community

12 months 10 issues

Quarter Page £65

Half Page £120

Full page £200

Advertising for Local and Charity organisations is free.

Severn Wye Bible Study Group

We are a small group of Christians enjoying a warm and nurturing fellowship together. We read scripture and talk about what it means and how we can apply it to our daily lives. We are learning together and there is no such thing as a silly question. If you're even a tiny bit curious, come along. Give it a go....you may love it as we do!!!!

Where: Shirenewton Church Room

When: 14.45 Tuesday afternoons

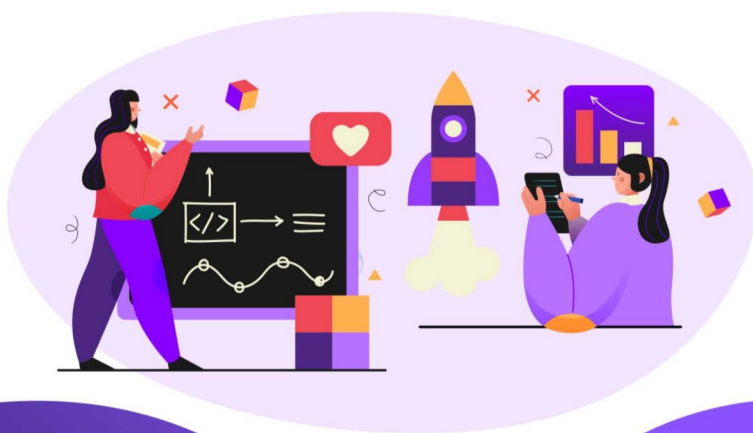
Why: Because it's encouraging, uplifting and good for the soul.



SUPPORT OUR SCHOOL PLAY OUR LOTTERY



- Tickets cost just £1 a week
- The easy way to help us raise funds
- Local cash prizes every week



BUY TICKETS:

Go to: www.yourschoollottery.co.uk

And search for: Shirenewton



GambleAware 18+

S&B Newspaper Home Delivery Service

First month FREE DELIVERY for new customers!

Various payment options available

1-7 DAYS A WEEK

DELIVERIES OF MORNING PAPERS

PLUS ALL MAGAZINES

So, relax and have your newspapers delivered

Phone:- Reg on 01633 411117 or

Steve on 07971 061495



The **MONMOUTHSHIRE** Window Company

T: 01291 630063

www.monmouthshirewindows.com

- Continually investing in the latest products.
- Highest standard of product installations.
- Showrooms across Monmouthshire & in Newport.
- FENSA Registered.
- High quality PVC & Aluminium products.
- Over 20 years of experience.

**BIFOLD DOORS • COMPOSITE DOORS • CASEMENT & FLUSH CASEMENT WINDOWS
FRENCH DOORS • SUPALITE TILED ROOF • CONSERVATORIES • SLIDING DOORS**



www.stepwisepodiatry.co.uk info@stepwisepodiatry.co.uk

HPCP Registered Podiatrists

Routine foot care, Diabetic foot checks, Ingrown toenails, Nail Surgery, Verrucas
Sports injury, foot pain and MLS Laser

Clinic locations in Tintern and Chepstow

Unit 4 Library Place, Manor Way, Chepstow, NP16 5HZ
Wye Valley Wellness Centre, Ashweir Lodge, Tintern, NP16 6SE
Home visits available for house bound patients

Let us fix your feet

Call us today for an appointment

Tel: 01291 689917

www.stepwisepodiatry.co.uk info@stepwisepodiatry.co.uk



Trophies
Glass
Plaques
Shields

Cups
Tankards
Medals
Engraving

07770773323 • info@theawardscompany.co.uk
www.theawardscompany.co.uk



THE PERSONAL TRAINING POD



FAT LOSS
SPECIALISTS



NUTRITION
TRACKING



LIFESTYLE
TARGETS



MENTAL
WELL BEING



FUNCTIONAL
MUSCLE



THE UNIQUE PRIVATE STUDIO FOR 1:1 AND SMALL GROUP TRAINING

WWW.PERSONALTRAININGPOD.COM

BENTLEY GREEN FARM, CRICK, MONMOUTHSHIRE, NP26 5UR

Feakes & Co Solicitors



For You and Your Family

- Disputes and Litigation
- Redundancy/Settlement Agreements
- Wills and Lasting Powers of Attorney
- Estate and Tax Planning

Chepstow office: 01291 639280

Newport office: 01633 358888

info@feakes-legal.com | www.feakes-legal.com

Senior Services

Pressure washing, Paths, Patios,
Fences, Driveways

Fence painting/Staining

Home Offices/Sheds

Contact Rob

TEL: 07391046450

Reliable, Traditional, Courteous



Daniel & Matthew Haines **LLANVAIR LANDSCAPES**

Grass cutting and strimming, Hedge trimming
NPTC approved Tree Surgery Turfing
Landscaping, Seeding Lawn Care: Spraying
Scarifying, Aerating, Fertilizing. Rough areas
Sprayed and Cleared. Rubbish Removal.
Garden Fences, Patios & Agricultural Fencing.

Fully Insured. Competitive Prices, Free Quotes

Contact: Daniel or Matthew Haines

01633 400548, 07930 893680
07930 893678

A photograph showing a large pile of stacked firewood logs, with the ends of the logs visible, showing various wood textures and colors.

Firewood for Sale

**Barn Stored Seasoned
Logs for Sale**

Contact Daniel or Matthew Haines

Tel.- 01633 400548
07930 893680 or 07930 893678

LOCAL CONTACTS

Severn Wye Ministry Area

Ministry Area Leader	Zoe and Barney Pimentel	severnwyema.co.uk 07754 306229
Team Vicar	Fr Michael Gollop	01291 622 064 frmichaelgollop1@gmail.com
Team Vicar	Reverend Philip Averay	01291 620980 revphilipaveray@gmail.com
Associate Priest	Reverend John Waters	07836 585 250
Ministry Area Leader's Warden	Ros Downes	
Ministry Area People's Warden	David Carne	david-carne@outlook.com 07887 853479
Ministry Area Lay Co-Chair	Hilary Hillier	
Ministry Area Treasurer	Kevin Higgs	

Church of St Thomas à Becket, Shirenewton

Lay Eucharistic Minister	Gilly Lambert	07821 725 690
Church Warden	Aileen Doggett	01291 641 459
Church Warden	Andrew Baker	01291 641 925
LCC Secretary	John Montague	01291 329 481 jmontyvet@hotmail.co.uk
LCC Treasurer	Graham Lambert	01291 641 175
LCC Members	Janet Horton	01291 641 783
	James Leney	01291 641 271
	Wendy Montague	01291 329 481
	Sally Saysell	01291 641 369
	John Burrows	01291 641 845
	Jane Smith-Haddon	01291 641525
Organists	Karen Millar	01291 650 521
	James Leney	01291 641 271
Tower Captain	Mike Penney	01291 650 653
Saysell Centre Booking	Will Smith-Haddon	07977 281 147 churchroombooking27@gmail.com
Safeguarding Officer	Andrew Baker	01291 641 925
Church Flowers	Maureen Moody	01291 641 524
Parish Magazine Editor	Bill Clark	01291 641 783
Parish magazine distribution	Jane Smith-Haddon	01291 641 525
200 Club	Aileen Doggett	01291 641 459

Ministry Area Council Representative

Wendy Montague 01291 329 481

MP/Monmouth CC & Community Council Representatives (as at October 2025)

Shirenewton Community Council

Clerk: Jan McLagan

shirenewtoncc@gmail.com

Shirenewton and Mynyddbach Ward

Philip Butterworth (Chair)	01291 641704	philip.b@shirenewtoncc.org.uk
Catherine Martin (Vice Chair)	01291 329610	cathie.m@shirenewtoncc.org.uk
Gary Mitchell	07979 913555	gary.m@shirenewtoncc.org.uk
Sophie Todd	07766 524709	sophie.t@shirenewtoncc.org.uk
Vacancy		

Earlswood and Newchurch Ward

Ian Martin	07467 176977	ian.m@shirenewtoncc.org.uk
Geoff Todd	07855 301806	geoff.t@shirenewtoncc.org.uk

MCC for Shirenewton

Louise Brown	07598 979719	louisebrown@monmouthshire.gov.uk
--------------	--------------	--

Member of Parliament

Catherine Ann Fookes	catherine.fookes.mp@parliament.uk
----------------------	--

Member of the Senedd

Peter Fox MS	Peter.Fox@senedd.wales
--------------	--

Police and SPCO Contacts

In an emergency 999;
To report an incident to the Police 111
To contact the Local SPCO Toby Wall [email:Toby.Wall@gwent.police.uk](mailto:Toby.Wall@gwent.police.uk)

Other Local Organisations

Beavers Julie Hitchcock 01291 650548
Church Fete John Burrows shirenewtonfete@gmail.com
Earlswood Hope Mr Raymond Jeremiah 01291 641726
Earlswood & Newchurch West Memorial Hall
Chairman Becca Allen 07889762840 chair@earlnew.com
Treasurer Geoff Todd 07855301806 treasurer@earlnew.com

Earlswood Valley Methodist Chapel

Gaerllwyd Baptist Avril Smith 01291 627677
Recreation Association Mrs E Remnant Brooklands, Usk Road NP16 6SA
Beverly Lyndsay 07798 780971
beverlylindsay@btinternet.com
Recreation Hall booking Beryl Saysell 01291 641637 saysellberyl@gmail.com
St Peters Church Newchurch
Enid Heritage 01291 622708
enidheritage@gmail.com

Shirenewton Local History Society

Dorothy Brabon 01291 641376
brabonnl@hotmail.com

Gwent Wildlife Trust Shirenewton and Mynyddbach Meadows **(previously SAMFAL)**

01600 740600

Caerwent Group Mothers Union

Treasurer Rosemary Carey 01291 425010 crcandkili@tiscali.co.uk
Bridget Evans 01291 408125
bridget.caldicot@gmail.com

Shirenewton Play Group **Shirenewton Primary School**

Beverly Lindsay Shirenewtonplaygroup@gmail.com

Mr Nick Penn, Head Teacher 01291 641774
shirenewtonprimary@monmouthshire.gov.uk

Shirenewton Toddler Group

Sarah Parker 07971 783434

Shirenewton Tennis Association

Andy Orrell shirenewtontennis@gmail.com

Fairtrade

Marion McAdam 01291 641316 msm316@gmail.com

Womens Institute (WI)

Angela Gray (President)
angela.deepwier@btopenworld.com
Jane Butterworth (Secretary) 01291 641704.

*If you know of any changes or omissions please contact the Editor Bill Clark
Telephone 01291 641783 or email parishmagshirenewton@gmail.com*

JOANNE HUME & SON LTD



Independent Family Funeral Directors

24 Hour Service

- Unattended cremations from £1095
- Male & Female Funeral Directors
- Private Chapel of Rest
- New Memorial Stones & Memorial Renovations
- Pre-paid Funeral Plans
- Free advice & assistance with grants.

ASK US WHAT WE CAN OFFER, COMPARED TO OTHER FUNERAL DIRECTORS.

168-170 Newport Road, Caldicot, Monmouthshire, NP26 4AA

Tel 01291 420972

office@joannehumeandson.co.uk

www.joannehumeandson.co.uk



SHIRENEWTON PARISH MAGAZINE EDITORIAL INFORMATION

Published: by The Church of St. Thomas à Becket Shirenewton

Editor: Bill Clark 01291 641783 email: parishmagshirenewton@gmail.com

The cost of the Magazine is £1.50 per issue/10 issues for £14.

Copies are delivered free by local distributors to those who have pre-paid.

Monthly copies are available at the Church.

Previous editions of the magazine are available online on the Church website at www.shirenewtonchurch.info.

**To order your regular copy, contact Jane Smith-Haddon
01291 641525/07816 233554 dolly.shirenewton@gmail.com**

The editor reserves the right to print free content and free advertisements in black and white and at a size to fit the pagination of the magazine.

Editorial policy is to print what you provide, space and technology permitting. The views expressed are those of the contributor.

Preferred Document format is an MS Word document attached to an email. Preferred Advert and Photograph format is JPEG attached to an email

**Deadline for the December 2025/January 2026 issue is
9:00 a.m. Monday 24th November 2025**

J & B Sewing Machines

Established 1961

www.jbsewing.com



- Domestic & Industrial Sewing Machines
- Servicing & Repairs
- Fabrics & Haberdashery
- Quilting & Creative Sewing Classes
- Coffee Mornings
- Serving South Wales For 58 Years
- **Helpful Friendly Advice!**



Main Dealers for:



J & B House
Curlew Close
Queensway Meadows
Newport
NP19 4SY
Tel: 01633 284646

Unit 4a Gripoly Mills
Sloper Road
Cardiff
CF11 8AA
Tel: 02922 402148